

# 2012 New Products





**Knobs, Handles and Hand Wheels**



**Cam Levers**

Cam levers allow quick and fine adjustments to the clamping action. The slightly arched shape of the lever and its end shape provide for a safe and comfortable grip, as well as an elegant design.



**Adjustable Handles**



**Pull Handles**



**Plastic Knurled Knobs**



**Plastic Lobed Knobs**



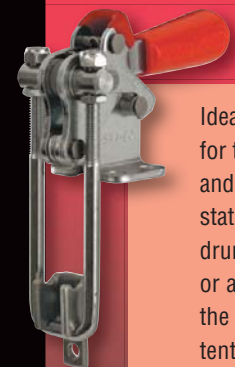
**Clamps and Workholding**



**Controlled Pull-Action Latch Clamps**



**Vertical Latch Clamps**



Ideal for quick clamping for the closure of covers and flaps on rotating or stationary containers, drums, boxes and molds or any application where the possibility of unintentional opening exists due to vibration or abrupt movement.

**Straight-Line Action Clamps**



**Fasteners and Hardware**



**Bearings and Power Transmission**



**Drawer Slides**



**Mechanical Slides**

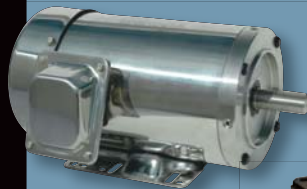


Slim and compact design makes it a multi-purpose solution for a wide range of applications.

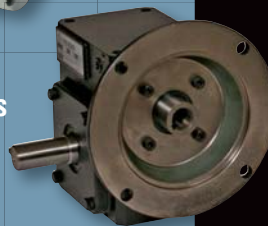
**Mechanical Slide Accessories**



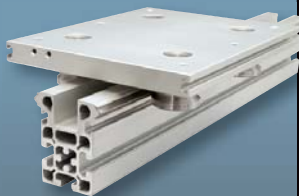
**Washdown Duty Motors**



**Worm Gear Speed Reducers**



**Linear Motion**

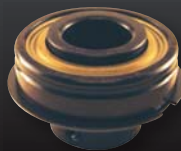


**Long Life Cam Followers and Yoke Rollers**

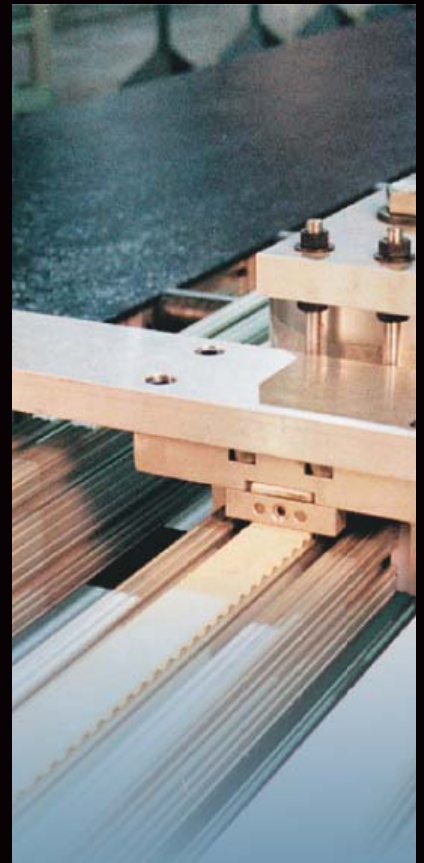


This cam follower is truly maintenance free. Its increased dynamic capacity extends the fatigue life from two to five times longer than conventional cam followers.

**ER Bearings**



**Self-Lubricating Bearings**

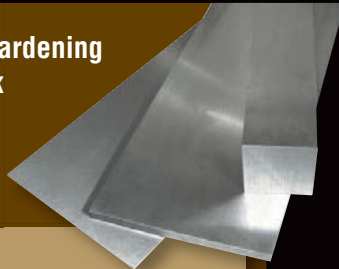




**Metalworking**



**496 Oil Hardening Flat Stock**



This stock provides good wear resistance and durability. Dimensionally stable, it can be used for the most intricate work. Fully spheroidized and annealed for uniform carbide size and easy machining. Full length identification prevents it from being confused with other steels.

**Abrasives and Accessories**

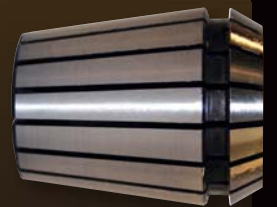


**Pneumatic Tools**



3M™ quality pneumatic tools are designed to optimize tool and abrasive performance during cutting, grinding, blending or finishing applications. Its design and advanced technology increase operator comfort by directing exhaust away from the operator.

**Collets, Collet Chucks and Accessories**



**Tools,  
Maintenance and  
Shop Supplies**



**Torque  
Drivers**



This driver set has fast, accurate torque control and easy torque adjustments. The cushion grips allow for maximum user comfort and the handle sizes are proportioned for optimal torque performance.

**Hand Tools**



**Magnetic  
Light Mine™**



Twelve rare earth magnets are positioned around the LED light, allowing it to stick to any steel surface and aim the light in any conceivable direction.

**Lubricants**



**Maintenance  
Products**



**Adhesives**



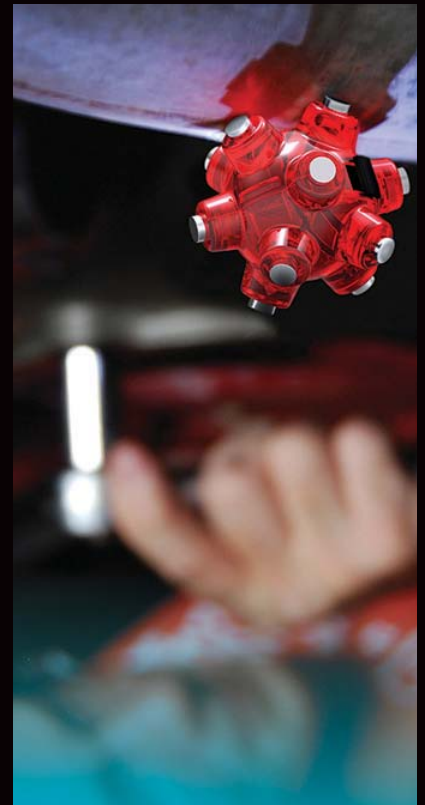
**Cleaners**



**Repellents**



**Insecticides**





**Pneumatics and Hydraulics**



**Structural Systems**

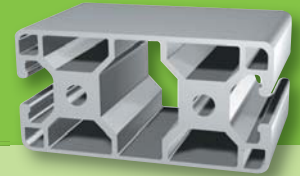


**Clamps**

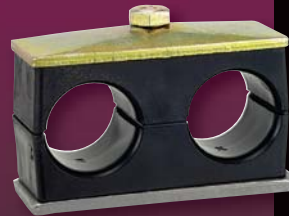
Beta clamps are ideal for clamping pipe, tube, hose and electric cables. They are an economical and easy way of securing them in many types of applications.



**Structural Framing Systems**



We call our modular product "The Industrial Erector Set®". Your imagination is your only limitation. Our system gives you the freedom to custom design work environments that satisfy your needs. No welding, no painting and no grinding involved!



**Fasteners**



**Joining Plates and Brackets**



Joining plates make building easy. They are used to connect profiles or reinforce a critical section. Choose from a wide selection of options!



**Safety**



**Signs and Accessories**



**Hand Protection**



**Eye Protection**



Tough Duralite® polycarbonate lens absorbs 99.9% of UV rays. Indirect venting circulates air to lens while keeping liquids out. Fits over most prescription or safety glasses.

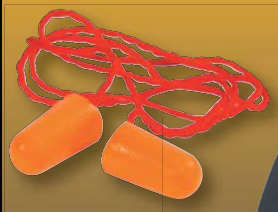
**Dust Masks/Respirators**



**First Aid Kits**



**Hearing Protection**



**Back Support Belts**



**Cordless Floor Dryer and Accessories**

Decrease your floor drying time by up to 90 percent! Dries floors 360° around unit and up to 15 feet in diameter. Scented cartridges neutralize and counteract unwanted odors in restrooms and trash areas.

**Floor Sign**



# BROWSE, SEARCH, EXPLORE, BUY. IT'S ALL EASY WITH REID SUPPLY.

## This is **BIG**, the **NEW** Reid Supply 2012-2013 Catalog

Our NEW catalog has been designed with one BIG goal —  
to help you find your products fast.

### Features:

- ✓ Row shading makes it easier to keep your place on the page
- ✓ Item numbers next to the price
- ✓ New photography and line drawings to better represent the product lines
- ✓ Discounts noted on applicable pages and inside the back cover

Call, go **Online** or **Fax** 855.421.7343 for your **FREE** copy!



## It's **BIG**, and it's all at the **NEW** ReidSupply.com

ReidSupply.com offers Customers their online portal to industrial products.

- ✓ Great Search Options
- ✓ Order Pad and Uploader
- ✓ Better Product Details
- ✓ Order History
- ✓ Easy Checkout
- ✓ Much More



Go to [ReidSupply.com](http://ReidSupply.com)

Scan me with app from  
<http://gettag.mobi>

## More **FREE CAD DRAWINGS** than you can shake a mouse at!

All over the world Engineers, Designers and Students are  
discovering the tens-of-thousands of FREE CAD product  
drawings at [ReidSupply.com](http://ReidSupply.com).

We make it easy with worldwide standard file types, and a really  
sweet 3D viewer that lets you manipulate the part you need  
before downloading it.

That's the way we roll here at Reid.

**FREE CAD** drawings at [ReidSupply.com](http://ReidSupply.com)



800.253.0421

[ReidSupply.com](http://ReidSupply.com)