

SAVINGS SPOTLIGHT

Prices Effective January 1- 31, 2008

Gerber Nautilus™
Save Over
20%
Page 15

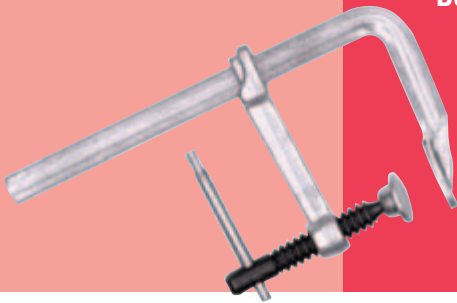


Machine Handles
As Low As
\$2.99
Page 3



Air Fittings
As Low As
99¢
Page 13

Bessey L-Clamps
As Low As
\$22.99
Page 5



Endless Round Slings
Save Up To
20%
Page 9



Engineer's Black Book
\$19.95
Page 12

**FREE
Drill Gauge With
Every Purchase!**



Manual Controls
Clamps and Workholding
Tooling Components
Fasteners and Hardware
Leveling Devices and Vibration Control
Material Handling
Bearings and Power Transmission
Metalworking
Maintenance, Repair and Operations (MRO)
Pneumatics and Hydraulics
Structural Systems
Safety

SNEAK PEEK - SEE THE 2008 REID SUPPLY CATALOG BEFORE IT HITS THE STREET!

Browse our NEW Online Catalog and discover why Reid Supply is the preferred source for industrial supplies. It's easy to find the products you need with this intuitive online tool.

- Bookmark your favorite pages
- Search by product, category or page
- Color-coded categories help you locate products fast
- Highlight or add a note to pages
- Email pages directly to co-workers, friends, or Purchasing Managers
- Multiple display options
- Click on a product, get the details



Our NEW FULL COLOR catalog is in the mail!

- Expanded to over 51,000 products
- Automatic quantity discounts
- New suppliers and product lines
- Integrated category color-coding in the catalog, fliers and on the web



Our FREE and informative RESOURCE GUIDES are online.

We're celebrating our 60th anniversary by doing more for you! Each month we'll be introducing a new Resource Guide, one for each of our twelve product categories. Manual Controls is the first in the series. It's an invaluable guide with topics on applied forces, designs, physical attributes, and many other key factors to consider when you select knobs, handles, hand wheels and levers. Download the Resource Guide FREE at ReidSupply.com, and stop by every month to get the next guide.



What's up with the COLORS?



Reid Supply is more colorful than ever. We've color-coded our product categories to make your job easier. Whether you're online, browsing our catalog, or checking out sale prices in the Savings Spotlight flier, color-coding saves time and gets you to the products you need quickly.

Ensure your sale price!

To receive Savings Spotlight sale prices specify promotional code ADQ along with the catalog number. It's just that easy.

SAVE MONEY
Use **Promo ADQ**
with **Catalog Number**
to receive your discount.

Black Cat. No.	Red C
Inch	
ADQB-60	
ADQB-62	
ADQB	

Order by phone, online or fax.

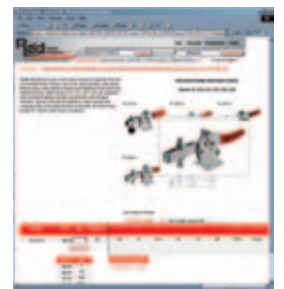
Call: 800.253.0421

- 7:00 a.m. to 8:00 p.m. EST, Monday through Friday

Shop anytime: ReidSupply.com

- Over 51,000 products
- Over 41,000 **FREE** CAD files

Fax anytime: 800.438.1145



**Save Up To 25%
ON BLACK
THERMOPLASTIC
MACHINE HANDLES
SHOWN HERE**

MACHINE HANDLES

Inch and Metric

Metric dimensions are shown in millimeters.



**Black Thermoplastic
Revolving - Wrench Flats**



Cat. No.	Handle		Wrench Flat Size	Thread		Sale Price Each
	Length	Dia.		Size	Length	
Inch						
ADQJCL-810	2.17	.79	.47	1/4-20	.51	4.29
ADQJCL-815	2.64	.91	.71	9/16-18	.51	4.93
ADQJCL-820	3.03	.98	.71	9/16-18	.51	5.29
ADQJCL-825	3.03	.98	.71	3/8-16	.63	5.29
ADQJCL-830	3.43	1.06	.79	3/8-16	.63	5.99
ADQJCL-835	3.43	1.06	.79	1/2-13	.79	5.99
ADQJCL-840	3.82	1.14	.79	3/8-16	.63	6.79
ADQJCL-845	3.82	1.14	.79	1/2-13	.79	6.79
Metric						
ADQJCL-850	55	20	12	M6x1	12	3.29
ADQJCL-855	67	23	18	M8x1.25	15	3.99
ADQJCL-860	77	25	18	M8x1.25	15	3.99
ADQJCL-865	77	25	18	M10x1.5	15	3.89
ADQJCL-870	87	27	20	M10x1.5	15	4.49
ADQJCL-875	87	27	20	M12x1.75	15	4.49
ADQJCL-880	97	29	20	M10x1.5	15	4.93
ADQJCL-885	97	29	20	M12x1.75	15	4.93

**Black Thermoplastic
Revolving - Internal Hex**



Cat. No.	Handle			Thread		Hex mm	Sale Price Each
	Length	Base Dia.	Size	Length			
Inch							
ADQJCL-975	2.05	.79	.43	1/4-20	.51	3	4.29
ADQJCL-980	2.44	.91	.55	1/4-20	.51	4	4.36
ADQJCL-985	2.44	.91	.55	9/16-18	.51	4	4.36
ADQJCL-990	2.83	.98	.55	9/16-18	.51	4	4.99
ADQJCL-995	2.83	.98	.55	3/8-16	.63	4.5	4.99
ADQJCL-1000	3.23	1.02	.55	3/8-16	.63	5	5.99
ADQJCL-1005	3.23	1.02	.55	1/2-13	.79	5	5.99
ADQJCL-1010	3.62	1.10	.55	3/8-16	.63	6	7.49
ADQJCL-1015	3.62	1.10	.55	1/2-13	.79	6	7.49
Metric							
ADQJCL-930	52	20	11	M6x1	12	3	3.29
ADQJCL-935	62	23	14	M6x1	15	4	3.49
ADQJCL-940	62	23	14	M8x1.25	15	4	3.49
ADQJCL-945	72	25	14	M8x1.25	15	4.5	3.79
ADQJCL-950	72	25	14	M10x1.5	15	4.5	3.79
ADQJCL-955	82	26	14	M10x1.5	15	5	4.49
ADQJCL-960	82	26	14	M12x1.75	15	5	4.49
ADQJCL-965	92	28	14	M10x1.5	15	6	5.99
ADQJCL-970	92	28	14	M12x1.75	15	6	5.99

**Black Thermoplastic
Revolving Folding - Conical**



Cat. No.	Handle		Wrench Flat Size	Thread		Wrench Flat Width	Sale Price Each
	Length	Dia.		Size	Length		
Inch							
ADQJCL-910	1.97	.79	.55	1/4-20	.51	.24	7.49
ADQJCL-915	2.76	.98	.79	5/16-18	.51	.26	8.49
Metric							
ADQJCL-890	50	20	14	M6x1	9	6	5.99
ADQJCL-895	70	25	20	M8x1.25	16	6.5	6.55

**Black Thermoplastic
Revolving Folding - Straight**



Cat. No.	Handle		Thread		Wrench Flat Width	Sale Price Each
	Length	Dia.	Size	Length		
Inch						
ADQJCL-920	3.23	.98	3/8-16	.34	.29	9.99
ADQJCL-925	3.54	.98	3/8-16	.34	.29	12.99
Metric						
ADQJCL-900	82	25	M10x1.5	17	7.5	7.99
ADQJCL-905	90	25	M10x1.5	17	7.5	10.49

STEEL MACHINE HANDLES SHOWN HERE AS LOW AS \$2.99

**Steel - Polished and Chrome Plated Finish
Revolving and Solid - Press Fit**



Polished Cat. No.	Chrome Cat. No.	OAL	Shank		Handle Dia.	Sale Price Each	
			Length	Dia.		Polished	Chrome
Solid							
ADQHS-17	ADQHS-17C	1.719	.375	.251-.252	.437	4.99	8.99
ADQHS-19	ADQHS-19C	1.906	.438	.251-.252	.625	7.99	9.99
ADQHS-21	—	2.156	.438	.313-.314	.750	6.99	—
ADQHS-24	ADQHS-24C	2.438	.438	.313-.314	.812	8.99	11.99
ADQHS-26	ADQHS-26C	2.688	.563	.376-.377	.875	6.99	16.99
ADQHS-30	ADQHS-30C	3.063	.688	.438-.439	1.000	12.49	15.99
ADQHS-34	—	3.438	.688	.438-.439	1.125	14.49	—
ADQHS-39	ADQHS-39C	3.906	.688	.438-.439	1.187	8.99	12.49
ADQHS-42	ADQHS-42C	4.250	.813	.438-.439	1.187	10.99	15.99
ADQHS-45	ADQHS-45C	4.563	.938	.501-.502	1.250	16.99	21.99
ADQHS-50	ADQHS-50C	5.000	.938	.501-.502	1.375	17.99	32.49
ADQHS-57	—	5.750	1.188	.626-.627	1.500	21.99	—
Revolving							
ADQHR-19	ADQHR-19C	1.906	.438	.251-.252	.625	16.99	19.99
ADQHR-26	ADQHR-26C	2.625	.563	.313-.314	.875	15.99	20.99
ADQHR-37	ADQHR-37C	3.781	.750	.376-.377	1.125	20.99	23.99
ADQHR-40	ADQHR-40C	4.031	.750	.438-.439	1.187	20.99	24.99
ADQHR-51	ADQHR-51C	5.125	.938	.501-.502	1.375	21.99	23.99

Bold catalog numbers conform to TCMAI standards.

**Steel - Polished Chrome Finish
Solid and Revolving - Threaded**



Cat. No.	Handle Length	Thread		Handle		Sale Price Each
		Length	Size	Dia.	Base Dia.	
Solid						
ADQB5-19	1 11/16	3/8	10-24	1/2	.32	2.99
ADQB5-25	2	1/2	1/4-20	5/8	.40	2.99
ADQB5-31	2 5/8	9/16	5/16-18	13/16	.51	3.99
ADQB5-37	3 3/16	11/16	3/8-16	1	.63	4.99
ADQB5-50	3 3/4	1 3/16	1/2-13	1 1/4	.75	7.99
Revolving						
ADQB6-19	1 7/8	3/8	10-24	1/2	.32	6.99
ADQB6-25	2 1/4	1/2	1/4-20	5/8	.40	6.99
ADQB6-31	2 13/16	9/16	5/16-18	13/16	.51	7.99
ADQB6-37	3 3/8	11/16	3/8-16	1	.63	9.99
ADQB6-50	4	1 3/16	1/2-13	1 1/4	.75	12.99

**Black Thermoplastic
Two Spoke
Without Handle**

HAND WHEELS



Hand wheels shown here are made from black thermoplastic with a molded in steel hub.

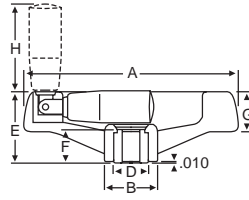


**Save
Up To
25%**

Cat. No.	Wheel Dia.	Wheel Height	Hub Dia.	Wheel Depth	Bore	Hub Height	Sale Price Each
ADQJCL-1020	3.15	1.34	.94	.55	.313	1.02	6.99
ADQJCL-1025	3.94	1.65	1.10	.63	.375	1.30	7.84
ADQJCL-1030	5.12	1.97	1.26	.79	.375	1.38	8.99
ADQJCL-1035	6.46	2.20	1.57	.94	.500	1.57	12.99
ADQJCL-1040	7.88	2.40	1.97	1.10	.625	1.54	16.99
ADQJCL-1045	10.04	2.80	2.20	1.26	.625	1.85	22.99
ADQJCL-1050	13.78	3.15	2.68	1.46	.750	1.97	76.99

**Black Plastic
Two Spoke
With Fold Away Handle**

**Sale Price
As Low As
\$22⁴⁹**



Hand wheel is supplied with a revolving fold away handle. The handle folds away by pulling up on it and moving towards the center. The handle snaps into use by pulling up.



Cat. No.	A	B	Bore	D	E	F	G	H	Sale Price Each
ADQKHJ-5	3.15	.91	.312	.71	1.38	.67	.71	1.97	22.49
ADQKHJ-10	3.90	.98	.375	.71	1.46	.67	.79	2.20	30.99
ADQKHJ-15	4.88	1.22	.375	.87	1.73	.87	.87	2.56	31.99
ADQKHJ-20	6.30	1.57	.500	1.02	2.01	1.06	.98	2.56	35.49
ADQKHJ-25	7.87	1.97	.625	1.18	2.40	1.34	1.10	3.15	41.99
ADQKHJ-30	9.84	2.32	.625	1.38	2.76	1.50	1.26	3.54	54.99
ADQKHJ-40	14.67	2.72	.750	1.57	3.23	1.69	1.50	3.54	86.99

**Aluminum - Plain Finish or Black Solid Web
With or Without Revolving Handle**

**Sale Price
As Low As
\$19⁹⁹**

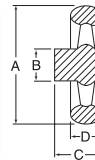
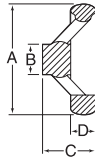
Made from cast aluminum with a highly polished rim. Also available with a black powder coating. The smooth spokeless web has no hazardous openings. Available with or without revolving handle. Handle is heavy duty black plastic with steel insert.



Plain Cat. No.	Black Cat. No.	Overall Dia.	Hub Dia.	Bore	Base Depth	Dish Depth	Ridge Width	Handle Length	Sale Price Each
w/o Handle									
ADQKHW-5	—	3.15	1.02	.500	.630	.413	.512	1.67	22.99
ADQKHW-10	ADQKHW-210	3.94	1.10	.500	.670	.512	.551	2.07	26.69
ADQKHW-15	ADQKHW-215	4.92	1.22	.500	.709	.609	.591	2.66	33.99
ADQKHW-20	ADQKHW-220	5.51	1.42	.625	.748	.687	.650	2.66	39.99
ADQKHW-25	ADQKHW-225	6.30	1.42	.625	.787	.748	.709	3.25	54.99
ADQKHW-30	ADQKHW-230	7.88	1.65	.750	.945	.827	.807	3.25	92.49
ADQKHW-35	ADQKHW-235	9.84	1.89	.875	1.100	.904	.904	3.64	124.99
w/ Plastic Revolving Handle									
ADQKHW-105	ADQKHW-305	3.15	1.02	.500	.630	.413	.512	1.67	25.99
ADQKHW-110	ADQKHW-310	3.94	1.10	.500	.670	.512	.551	2.07	32.99
ADQKHW-115	ADQKHW-315	4.92	1.22	.500	.709	.609	.591	2.66	38.89
ADQKHW-120	ADQKHW-320	5.51	1.42	.625	.748	.687	.650	2.66	44.59
ADQKHW-125	ADQKHW-325	6.30	1.42	.625	.787	.748	.709	3.25	60.69
ADQKHW-130	ADQKHW-330	7.88	1.65	.750	.945	.827	.807	3.25	99.89
ADQKHW-135	—	9.84	1.89	.875	1.100	.904	.904	3.64	130.99

Unfinished Cast Iron and Aluminum

These hand wheels are blank so that they can be modified to user's specifications. Hand wheels come with 2, 3, 4, 5 or 6 spokes as noted below. Made of unfinished cast iron or aluminum for more economical use. Available straight or dished.



**Sale Price
As Low As
\$9⁹⁹**

Dished/Offset

Cast Iron Cat. No.	Aluminum Cat. No.	No. of Spokes	A	B	C	D	Sale Price Each
ADQBOW-4	ADQBAOW-4	2	4	1 1/4	1 1/2	7/8	9.99
ADQBOW-5	—	3	5	1 1/4	1 3/4	7/8	12.99
ADQBOW-6	ADQBAOW-6	3	6	1 1/2	1 7/8	7/8	14.99
ADQBOW-7	—	3	7	1 5/8	2 1/4	1	15.49
ADQBOW-8	ADQBAOW-8	3	8	1 3/4	2 1/2	1	15.99
ADQBOW-9	—	3	9	2	2 3/4	1 1/8	24.99
ADQBOW-10	ADQBAOW-10	3	10	2 1/8	3	1 1/8	32.49
ADQBOW-12	ADQBAOW-12	4	12	2 1/2	3 1/4	1 1/4	35.49
ADQBOW-15	—	5	15	3	3 1/8	1 1/4	52.99
ADQBOW-18	—	6	18	3 1/8	3 7/8	1 1/2	69.99
ADQBOW-20	—	6	20	3 1/8	3 7/8	1 1/2	169.99

Straight

Cast Iron Cat. No.	Aluminum Cat. No.	No. of Spokes	A	B	C	D	Sale Price Each
ADQBSW-4	ADQBASW-4	2	4	1 1/4	1 1/8	7/8	9.99
ADQBSW-5	—	3	5	1 1/2	1 1/8	7/8	12.99
ADQBSW-6	ADQBASW-6	3	6	1 1/2	1 1/4	7/8	14.99
ADQBSW-7	—	4	7	1 3/4	1 1/4	3/4	15.49
ADQBSW-8	ADQBASW-8	3	8	1 7/8	1 1/2	7/8	15.99
ADQBSW-10	ADQBASW-10	3	10	2 1/4	2 1/4	1	25.99
ADQBSW-12	ADQBASW-12	4	12	3	3	1 1/4	35.49
ADQBSW-14	—	4	14	3	3 1/2	1 1/4	49.99
ADQBSW-16	—	4	16	3	3 1/2	1 1/2	77.99

**Black Thermoplastic
With or Without Revolving Handle**

Economy Hand Wheels



Hand wheels shown here are made from black thermoplastic with a molded in steel hub.



Cat. No.	Wheel Dia.	Wheel Height	Hub Dia.	Wheel Depth	Handle Length	Bore	Sale Price Each
Inch With Revolving Handle							
ADQJCL-1540	3.15	1.30	1.14	.98	2.20	.313	10.49
ADQJCL-1545	3.15	1.30	1.14	.98	2.20	.375	10.49
ADQJCL-1550	3.15	1.30	1.14	.98	2.20	.500	10.49
Inch Without Revolving Handle							
ADQJCL-1555	3.15	1.30	1.14	.98	—	.313	7.49
ADQJCL-1560	3.15	1.30	1.14	.98	—	.375	7.49
ADQJCL-1565	3.15	1.30	1.14	.98	—	.500	7.49

**Sale Price
As Low As
\$7⁴⁹**

IMPORTANT NOTE: Besides being able to give you an immediate shipment on these standard items, we are equipped to modify to your specific requirements. The more common modifications, bores, keyways and set screw holes may be priced by calling our Customer Service Representatives.

Spring Clamp

CLAMPS



Save
Up To
20%

Spring clamps are extra hands. Use on wood, metal, fabrics, plastic or anywhere spring pressure is adequate and fast application/removal is important. Jaws on the 2" and larger jaw opening sizes are shaped for holding round stock. Poly-vinyl coated tips prevent marring and coated handles provide cushioned grip. Made of cold-finished steel, plated.

Cat. No.	Description	Jaw Opening	Jaw Lgth.	Jaw Reach	Sale Price Each
ADQPSC-5	No Coating	1	4	1 1/4	1.18
ADQPSC-10	Coated Handles	1	4	1 1/4	1.67
ADQPSC-20	Coated Tips and Handles	1	4	1 1/4	1.86
ADQPSC-25	No Coating	2	6	2	2.33
ADQPSC-30	Coated Handles	2	6	2	2.90
ADQPSC-40	Coated Tips and Handles	2	6	2	2.91
ADQPSC-45	No Coating	3	9	3	5.90

Bessey L-Clamp
Heat Treated Steel

Easy to use. Slide moveable arm into position and tighten screw spindle. Provides instant clamping at any opening. Saves time over ordinary C-clamps. Deep throat allows for greater reach.

Sale Price
As Low As
\$22⁹⁹



Cat. No.	Jaw Opening	Throat Depth	Spindle Dia.	Clamp Pressure	Sale Price Each
Regular Duty					
ADQBLC-15	0-6	4 3/4	.563	1,330	22.99
ADQBLC-25	0-8	4 3/4	.775	2,600	39.99
Heavy Duty					
ADQBLC-50	0-12	5 1/2	.775	3,200	57.99
ADQBLC-60	0-20	4 3/4	.775	3,200	73.99
Extra Heavy Duty					
ADQBLC-70	0-12	7	.850	4,880	119.99
ADQBLC-80	0-20	7	.850	4,880	129.99
ADQBLC-90	0-40	7	.850	4,880	149.99

Pipe Clamp Fixture

Sale Price
\$14⁹⁹



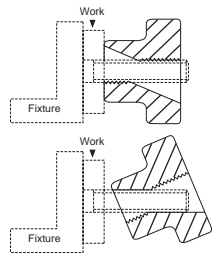
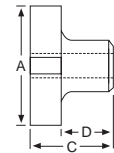
One set of fixtures may be used to make any number of bar clamps simply by mounting on different lengths of 3/4" black pipe. Made of malleable iron with baked enamel finish. Pipe is not included.

Cat. No.	Description	Sale Price Each
ADQPCF-50	3/4" Pipe Clamp Fixture	14.99

QUICK ACTING KNOBS

For faster clamping. Tilt knob and it will slide in or out. Straighten knob and threads will engage for clamping. Many tooling applications. Made from powdered metal.

Save
Up To
20%



Cat. No.	Thread Size	A	B	C	D	Sale Price Each
ADQQK-1	1/4-20	1 1/8	9/16	5/8	5/16	3.18
ADQQK-2	5/16-18	1 1/2	11/16	7/8	1/2	3.72
ADQQK-3	3/8-16	2	13/16	1	1/2	4.24
ADQQK-4	1/2-13	2 1/2	1	1 1/8	9/16	5.21
ADQQK-5	5/8-11	3	1 1/4	1 1/4	5/8	6.55
ADQQK-6	3/4-10	3	1 1/4	1 1/4	5/8	12.06

MACHINIST'S JACK

Sale Price
\$6⁹⁹



Use on drill presses, shapers milling machines, planers and electric appliances or any place leveling is needed. Heavy cast steel base with adjustable screw and tilting swivel head and lock nut for permanent positioning. Approximately 1,000 lbs. capacity. 3" high, 4" fully extended.

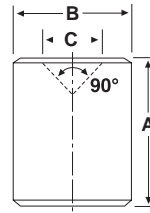
Cat. No.	Description	Sale Price Each
ADQGEN-7	Machinist's Jack	6.99

BALL BUTTONS

Stainless Steel

The perfect mating detent for ball plungers or for other similar applications. Hardened and ground. Materials is 440C stainless steel.

Cat. No.	For use with Ball Diameter	A	End Force Lbs.		Sale Price Each
			+ .0002	-.0000	
ADQVD-1	.0620	1/8	.1075	.056	2.40
ADQVD-2	.0780	1/8	.1175	.061	2.40
ADQVD-3	.0938	3/16	.1614	.069	2.40
ADQVD-4	.1250	1/4	.2034	.111	2.55
ADQVD-5	.1560	5/16	.2659	.139	2.60
ADQVD-6	.1875	3/8	.3284	.164	2.65
ADQVD-7	.2813	1/2	.4378	.241	2.99
ADQVD-8	.3750	5/8	.5472	.330	3.30

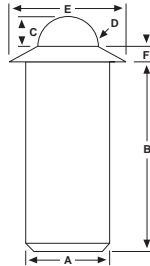


Save Up To 21%

PUSH FIT BALL PLUNGERS

Push fit ball plungers can be used when a threaded ball plunger is impractical or when threaded adjustments are not required for detent. Easy installation for use in wood, soft plastic or aluminum. Steel bodies are made of 12L14 steel with black oxide finish. Stainless bodies are Type 303, stainless balls are Type 440.

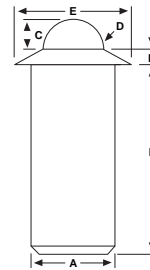
Light Pressure
Steel or Stainless Steel Body
With Stainless Steel or Nylon Ball



Save Up To 33%

Steel Cat. No.	Stainless Cat. No.	End Force Lbs.		Dimensions						Sale Price Each	
		Initial	Final	A	B	C	D	E	F	Steel	Stainless
With Stainless Steel Ball											
ADQPFB-47	ADQSPFB-47	.40	1.3	.125	.252	.035	.094	.187	.032	1.65	3.25
ADQPFB-48	ADQSPFB-48	.75	2.5	.125	.252	.035	.094	.187	.032	1.65	3.25
ADQPFB-51	ADQSPFB-51	1.00	2.5	.188	.405	.058	.156	.250	.035	1.65	2.99
ADQPFB-52	ADQSPFB-52	2.00	5.0	.188	.394	.058	.156	.250	.040	1.55	2.99
ADQPFB-53	ADQSPFB-53	1.50	3.5	.250	.481	.070	.187	.312	.044	1.65	3.10
ADQPFB-54	ADQSPFB-54	3.00	7.0	.250	.471	.070	.187	.312	.048	1.65	3.10
ADQPFB-55	ADQSPFB-55	2.00	5.0	.312	.643	.090	.250	.375	.045	1.69	3.25
ADQPFB-56	ADQSPFB-56	4.00	10.0	.312	.643	.090	.250	.375	.045	1.69	3.25
ADQPFB-57	ADQSPFB-57	2.50	7.0	.375	.785	.110	.312	.500	.078	1.69	3.25
ADQPFB-58	ADQSPFB-58	5.00	14.0	.375	.786	.110	.312	.500	.081	1.69	3.25
ADQPFB-59	ADQSPFB-59	4.00	9.00	.500	1.130	.161	.437	.688	.088	1.85	3.50
ADQPFB-60	ADQSPFB-60	8.00	18.0	.500	1.210	.161	.437	.688	.110	1.85	3.59
With Nylon Ball											
ADQPFB-147	ADQSPFB-147	.40	1.3	.125	.252	.035	.094	.187	.032	1.95	3.15
ADQPFB-148	ADQSPFB-148	.75	2.5	.125	.252	.035	.094	.187	.032	1.95	3.15
ADQPFB-151	ADQSPFB-151	1.00	2.5	.188	.394	.058	.156	.250	.040	1.79	2.90
ADQPFB-152	ADQSPFB-152	2.00	5.0	.188	.394	.058	.156	.250	.040	1.79	2.90
ADQPFB-153	ADQSPFB-153	1.50	3.5	.250	.471	.070	.187	.312	.045	1.86	2.99
ADQPFB-154	ADQSPFB-154	3.00	7.0	.250	.471	.070	.187	.312	.048	1.86	2.99
ADQPFB-155	ADQSPFB-155	2.00	5.0	.312	.643	.090	.250	.375	.045	1.95	3.15
ADQPFB-156	—	4.00	10.0	.312	.643	.090	.250	.375	.045	1.95	—
ADQPFB-157	ADQSPFB-157	2.50	7.0	.375	.786	.110	.312	.500	.078	1.95	3.15
ADQPFB-158	ADQSPFB-158	5.00	14.0	.375	.786	.110	.312	.500	.081	1.95	3.15
ADQPFB-160	—	8.00	18.0	.500	1.100	.161	.437	.688	.110	2.10	—

Heavy Pressure
Steel or Stainless Steel Body
With Stainless Steel or Delrin Ball



Steel Cat. No.	Stainless Cat. No.	End Force Lbs.		Dimensions						Sale Price Each	
		Initial	Final	A	B	C	D	E	F	Steel	Stainless
With Stainless Steel Ball											
ADQPFB-200	ADQSPFB-200	2.0	5.0	.125	.252	.035	.093	.187	.032	1.95	3.45
ADQPFB-201	ADQSPFB-201	4.0	10.0	.188	.405	.058	.156	.250	.035	1.95	3.45
ADQPFB-202	ADQSPFB-202	6.0	13.0	.250	.481	.070	.187	.312	.044	2.00	3.55
ADQPFB-203	ADQSPFB-203	8.0	16.0	.312	.643	.090	.250	.375	.045	2.00	3.65
ADQPFB-204	ADQSPFB-204	10.0	18.0	.375	.785	.110	.312	.500	.078	2.00	3.75
ADQPFB-205	ADQSPFB-205	12.0	23.0	.500	1.13	.161	.437	.688	.088	2.25	4.00
With Delrin Ball											
ADQPFB-206	ADQSPFB-206	2.0	5.0	.125	.252	.035	.093	.187	.032	1.95	3.45
ADQPFB-207	ADQSPFB-207	4.0	10.0	.188	.405	.058	.156	.250	.035	1.95	3.45
ADQPFB-208	ADQSPFB-208	6.0	13.0	.250	.481	.070	.187	.312	.044	2.00	3.55
ADQPFB-209	ADQSPFB-209	8.0	16.0	.312	.643	.090	.250	.375	.045	2.00	3.65
ADQPFB-210	ADQSPFB-210	10.0	18.0	.375	.785	.110	.312	.500	.078	2.00	3.75
ADQPFB-211	ADQSPFB-211	12.0	23.0	.500	1.13	.161	.437	.688	.088	2.25	4.00

Save Up To 36%

WRENCHES FOR SPRING AND BALL PLUNGERS



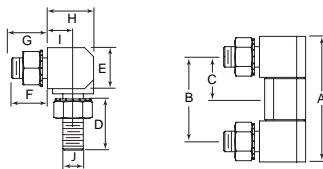
Provides fast installation or removal of spring, ball or stubby spring plungers (including metric). Prevents spring damage that can result when a screwdriver is used on the ball or plunger end. A real convenience and time saver.

Cat. No.	For Thread Size	Sale Price Each
ADQVW-48	6-32	3.85
ADQVW-50	8-32 & 8-36	3.95
ADQVW-52	10-32, M4 & M5	4.05
ADQVW-54	1/4-20, 1/4-28 & M6	4.20
ADQVW-56	5/16-18 & M8	4.35
ADQVW-58	3/8-16 & M10	4.65
ADQVW-60	1/2-13 & M12	5.65
ADQVW-62	5/8-11 & M16	6.05
ADQVW-64	3/4-10 & M10	7.15
ADQVW-66	1-8	7.65

Save Up To 20%

Save 20% ON THESE HINGES

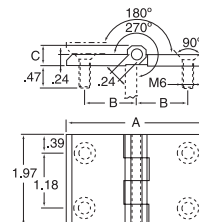
Stainless Steel - Type 304 or 316
180° Screw On Hinges
For Projection Doors



Cat. No.	A	B	C	D	E	F	G	H	I	J	Sale Price Each
304 Stainless Steel											
ADQELH-915	1.54	1.07	0.54	0.55	0.47	0.39	0.47	0.53	0.3	M6	14.05
ADQELH-917	1.93	1.3	0.65	0.87	0.63	0.55	0.63	0.71	0.39	M8	21.55
316 Stainless Steel											
ADQELH-916	1.54	1.07	0.54	0.55	0.47	0.39	0.47	0.53	0.3	M6	40.75
ADQELH-918	1.93	1.3	0.65	0.87	0.63	0.55	0.63	0.71	0.39	M8	53.49

Diecast Flush Bolt On Hinges

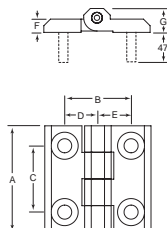
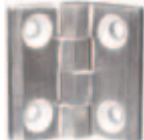
Available in either chrome or with black powder coat and with either studs or countersunk screw holes.



Stud Cat. No.	Countersink Cat. No.	Color	A	B	C	Sale Price Each	
						Stud	Countersink
ADQELH-301	ADQELH-303	Chrome	2	.59	.45	12.60	9.75
ADQELH-302	ADQELH-304	Black	2	.59	.45	11.00	8.00
ADQELH-305	ADQELH-307	Chrome	3	1.10	.43	13.55	12.29
ADQELH-306	ADQELH-308	Black	3	1.10	.43	14.25	12.89

Stainless Steel - Type 316

Countersunk Screw

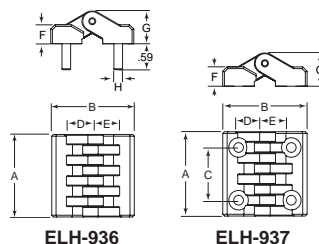


Cat. No.	A	B	C	D	E	F	G	Sale Price Each
ADQELH-923	1.57	1.57	0.98	0.49	0.49	0.2	0.35	14.25
ADQELH-924	1.97	1.97	1.18	0.59	0.59	0.24	0.45	14.55
ADQELH-925	1.97	1.97	1.18	1.1	1.1	0.24	0.45	16.00
ADQELH-926	2.36	2.36	1.42	0.71	0.71	0.31	0.59	17.49

180° Screw On Hinges

Black Polyamide

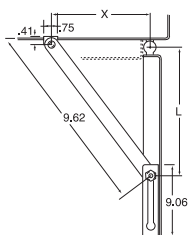
Countersunk or Stud



Available with either studs or countersunk screw holes. All are made of black polyamide.

Countersunk Cat. No.	Stud Cat. No.	A	B	C	D	E	F	G	H	Sale Price Each	
										Countersunk	Stud
ADQELH-936	ADQELH-937	1.89	1.89	1.18	0.59	0.59	0.43	0.75	M5	3.35	3.79
ADQELH-938	ADQELH-939	2.52	2.52	1.57	0.79	0.79	0.53	0.92	M6	3.55	4.05

DOOR STOPS



Holds door open at specific angle and prevents door from opening too far. When door is open fully, catch will hold door in place. To release door, push open slightly and catch is released. Available in zinc plated steel or Type 304 stainless steel. Opening angle is determined by "X" and "L" dimensions.



Cat. No.	Description	Sale Price Each
ADQECS-1087	Zinc Plated Steel Door Stop	11.35
ADQECS-1088	Type 304 Stainless Door Stop	28.00

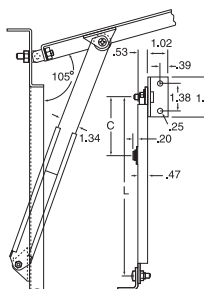
Heavy Duty

COVER STAYS

Telescopic cover stay uses either cam action or push button. Used to hold covers up. Metal catch provides positive locking in the fully extended position. To release the catch, simply raise the cover and the metal catch is released, allowing the cover to be closed. Made from heavy duty steel, zinc plated. Door angle is optional.

Cat. No.	L		C	Sale Price Each
	Retracted	Extended		
ADQECS-1097	8.75	14	2.52	11.95
ADQECS-1099*	8.75	15	—	7.49
ADQECS-1098	15.67	26.97	3.35	13.45

*Push button release

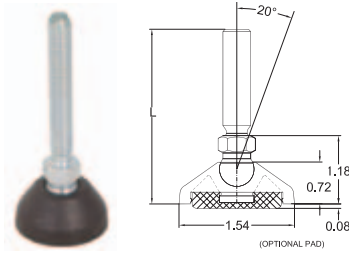


Save Up To 20%

Save 20% ON THESE NYLON LEVELING PADS

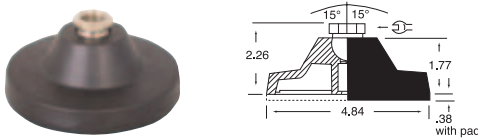
These leveling pads are a good low cost choice for a wide range of applications. The base is made from reinforced polyamide (nylon). They offer high strength, good impact resistance as well as good resistance to many organic acids, chemicals, alkaline and salt. The optional rubber pads are available separately below for noise and vibration reduction on the stud styles. Metric dimensions are shown in millimeters.

1.54" Pad - Max. Load: 700 Lbs. Inch and Metric Steel and Stainless Stem



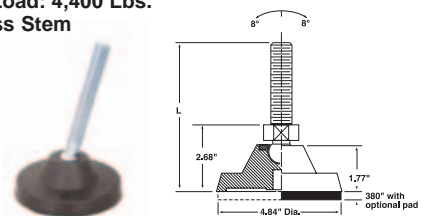
Steel Cat. No.	Stainless Cat. No.	Thread	L	Sale Price	
				Steel	Stainless
Inch					
ADQRL-2510-P	ADQRL-2510-S	5/16-18	2.60	4.89	6.02
—	ADQRL-2515-S	5/16-18	3.60	—	7.04
ADQRL-2520-P	ADQRL-2520-S	3/8-16	2.60	5.38	6.53
—	ADQRL-2525-S	3/8-16	3.60	6.22	7.42
ADQRL-2530-P	ADQRL-2530-S	1/2-13	2.60	5.86	6.97
—	ADQRL-2535-S	1/2-13	3.60	6.86	8.94
ADQRL-2540-P	ADQRL-2540-S	5/8-11	2.60	6.56	7.72
—	ADQRL-2545-P	5/8-11	3.60	7.45	—
Metric					
ADQRL-2550-P	ADQRL-2550-S	M8x1.25	68	6.18	7.55
—	ADQRL-2555-S	M8x1.25	94	6.53	8.82
—	ADQRL-2560-S	M10x1.50	68	—	8.16
ADQRL-2565-P	—	M10x1.50	94	6.49	—
—	ADQRL-2575-S	M12x1.75	94	—	8.66
Vibration Pad					
ADQSX-2595-VP	Rubber Pad for 1.54" Base			1.30	—

4.84" Pad - Max. Load: 4,400 Lbs. Steel and Stainless Socket Internal Threads



Steel Cat. No.	Stainless Cat. No.	Thread	Sale Price Each		
			Steel	Stainless	
ADQRL-3305-P	ADQRL-3305-S	3/4-10	15.49	18.97	
Vibration Pad					
ADQRL-150-VP	Rubber Pad w/Steel Plate for 4.84" Base			15.18	—

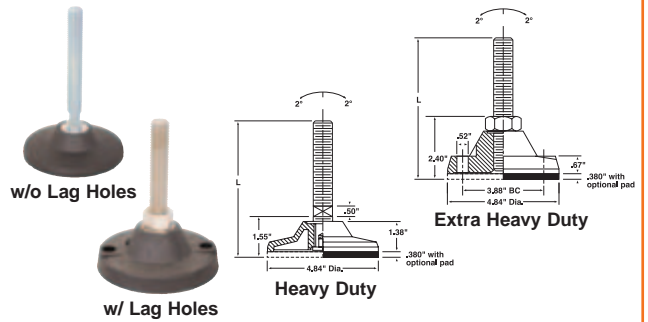
4.84" Pad - Max. Load: 4,400 Lbs. Steel and Stainless Stem



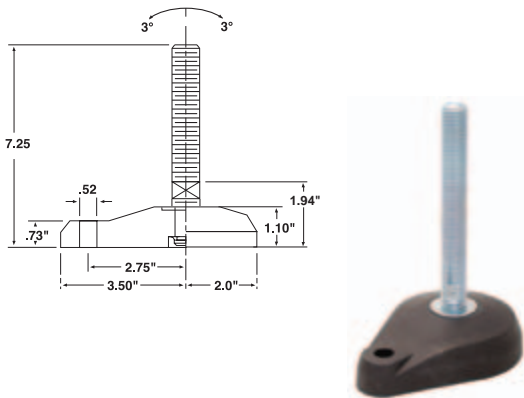
Steel Cat. No.	Stainless Cat. No.	Thread	L	Sale Price Each	
				Steel	Stainless
ADQRL-1504-P	ADQRL-1504-S	3/4-10	5.63	15.49	18.97
—	ADQRL-1506-P	3/4-10	8.25	17.74	—
Vibration Pad					
ADQRL-150-VP	Rubber Pad w/Steel Plate for 4.84" Base			15.18	—

4.84" Pad - Max. Load: 8,000 or 9,900 Lbs. Steel and Stainless Stem

Steel Cat. No.	Stainless Cat. No.	Thread	L	Sale Price Each	
				Steel	Stainless
Heavy Duty w/o Lag Holes - Max. Load: 8,000 Lbs.					
ADQRL-1601-P	ADQRL-1601-S	3/4-10	7.50	16.78	20.78
ADQRL-1602-P	ADQRL-1602-S	1-8	7.48	18.65	23.46
ADQRL-1615-P	—	1-8	10.08	30.17	—
ADQRL-1604-P	—	1 1/4-7	7.48	23.90	—
ADQRL-150-VP	Rubber Pad w/Steel Plate for 4.84" Base			15.18	—
Extra Heavy Duty w/Lag Holes - Max. Load: 9,900 Lbs.					
ADQRL-1701-P	ADQRL-1701-S	3/4-10	5.97	16.70	20.66
ADQRL-1702-P	ADQRL-1702-S	3/4-10	7.48	19.39	24.16
ADQRL-1703-P	ADQRL-1703-S	1-8	7.48	21.30	26.90
ADQRL-1715-P	—	1-8	10.07	26.46	—
Vibration Pad					
ADQRL-150-VP	Rubber Pad w/Steel Plate for 4.84" Base			15.18	—

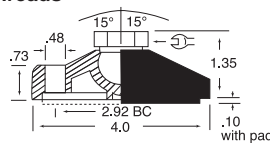


5.50" Pad - Max. Load: 7,200 Lbs. Single Lag Hole - Cast Nylathane Base Steel and Stainless Stem



Steel Cat. No.	Stainless Cat. No.	Thread	Sale Price Each	
			Steel	Stainless
ADQRL-2110-P	ADQRL-2110-S	3/4-10	22.94	33.18
ADQRL-2115-P	ADQRL-2115-S	1-8	24.80	35.43
ADQRL-2125-P	—	1 1/4-7	30.05	—

4" Pad - Max. Load: 2,600 Lbs. Inch and Metric Steel and Stainless Socket Internal Threads



Steel		Thread	Sale Price Each
Cat. No.			
w/o Lag Holes - Inch			
ADQRL-2910-P		5/8-11	9.95
w/ Lag Holes - Inch			
ADQRL-3110-P		5/8-11	8.64
ADQRL-3115-P		3/4-10	11.06
w/Lag Holes - Metric			
ADQRL-3125-P		M16 X 2.0	15.22
Stainless			
Cat. No.		Thread	Sale Price Each
w/o Lag Holes - Inch			
ADQRL-2905-S		1/2-13	11.93
ADQRL-2910-S		5/8-11	12.96
ADQRL-2915-S		3/4-10	17.06
w/ Lag Holes - Inch			
ADQRL-3105-S		1/2-13	11.93
ADQRL-3115-S		3/4-10	17.06
Vibration Pad			
Cat. No.	Description		Sale Price Each
ADQRL-140-VP	Rubber Pad for 4" Base		6.88

Save 20% ON ALL SLINGS SHOWN HERE

Adjust-A-Link™ Adjustable Chain Slings

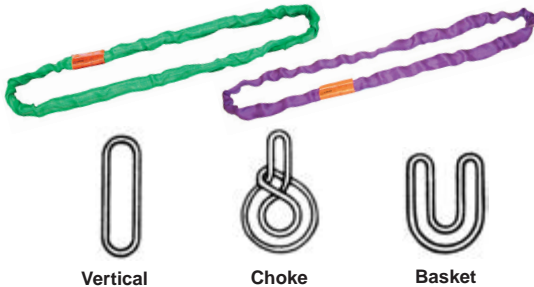
Cat. No.	Chain Size	Rated Capacities (lbs.)		Length (Ft.)	Sale Price Each
		Single @ 90°	Double @ 60°		
ADQLIF-95	7/32	2,100	3,600	6	157.63
ADQLIF-96	7/32	2,100	3,600	10	198.16
ADQLIF-97	9/32	3,500	6,100	6	237.97
ADQLIF-98	9/32	3,500	6,100	10	312.86
ADQLIF-99	3/8	7,100	12,300	10	387.60
ADQLIF-100	3/8	7,100	12,300	14	451.16
ADQLIF-101	1/2	12,000	20,800	10	643.74
ADQLIF-102	1/2	12,000	20,800	14	711.75

The most easily adjustable and versatile chain sling available. Ideal for machine shop or maintenance departments. Made with grade 80 alloy chain. Proof tested and certified to comply with OSHA.



Tuflex® Endless Round Slings

Round slings have a double wall cover for greater life and added protection. Wear points can be shifted to extend life of the sling. Chokes tighter and releases easier than other slings. Color coded for rated capacity. Has red core warning yarn inspection system.



Cat. No.	Color	Rated Capacities (lbs.)			Length (Ft.)	Sale Price Each
		Vertical	Choke	Basket		
ADQLIF-41	Purple	2,600	2,100	5,200	4	10.68
ADQLIF-42	Purple	2,600	2,100	5,200	6	14.69
ADQLIF-43	Purple	2,600	2,100	5,200	8	18.70
ADQLIF-44	Purple	2,600	2,100	5,200	10	22.70
ADQLIF-45	Purple	2,600	2,100	5,200	12	26.71
ADQLIF-46	Green	5,300	4,200	10,600	4	12.94
ADQLIF-47	Green	5,300	4,200	10,600	6	18.22
ADQLIF-48	Green	5,300	4,200	10,600	8	23.49
ADQLIF-49	Green	5,300	4,200	10,600	10	28.76
ADQLIF-50	Green	5,300	4,200	10,600	12	34.04
ADQLIF-51	Yellow	8,400	6,700	16,800	4	17.20
ADQLIF-52	Yellow	8,400	6,700	16,800	6	24.30
ADQLIF-53	Yellow	8,400	6,700	16,800	8	31.42
ADQLIF-54	Yellow	8,400	6,700	16,800	10	38.52
ADQLIF-55	Yellow	8,400	6,700	16,800	12	45.63
ADQLIF-56	Red	13,200	10,600	26,400	4	25.46
ADQLIF-57	Red	13,200	10,600	26,400	6	36.02
ADQLIF-58	Red	13,200	10,600	26,400	8	46.58
ADQLIF-59	Red	13,200	10,600	26,400	10	57.14
ADQLIF-60	Red	13,200	10,600	26,400	12	67.71
ADQLIF-61	Blue	21,200	17,000	42,400	4	39.24
ADQLIF-62	Blue	21,200	17,000	42,400	6	56.43
ADQLIF-63	Blue	21,200	17,000	42,400	8	73.62
ADQLIF-64	Blue	21,200	17,000	42,400	10	90.82
ADQLIF-65	Blue	21,200	17,000	42,400	12	108.01

Accoloy A8A Chain

Sale Price
As Low As
\$3.49
Per Foot

Let Us Cut to Your Length Specifications

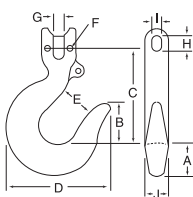
Meets all guidelines for grade 80 chain and ASTM A391-86. This alloy chain has excellent energy absorption properties. Widely used for slings, magnets, heavy duty dragging and pulling.

LIFTING CHAINS



Cat. No.	Chain Size	Load Limit	Inside Lgth.	Inside Width	Sale Price Per Ft.
ADQACC-505	9/32	3,500	.846	.405	3.99
ADQACC-510	3/8	7,100	1.209	.567	3.49
ADQACC-515	1/2	12,000	1.571	.736	4.99

Clevis Type Sling Hooks



Need a Hoist Ring? See our Full Line Catalog or go to www.ReidSupply.com

CHAIN HOOKS

Sale Price
As Low As
\$24.99

Engineered to make rapid, high integrity chain-to-hook connections. No bulky connection link is required. Drop forged, rated at grade 80. Orange color.

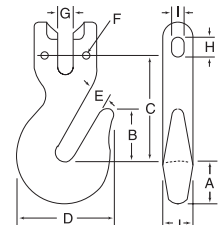


Cat. No.	Chain Size	Load Limit	A	B	C	D	E	F	G	H	I	J	Sale Price Each
ADQACC-705	9/32	4,300	1	1 1/2	3 3/8	3 5/8	17/32	1/8	3/8	13/32	11/32	5/8	24.99
ADQACC-710	3/8	8,800	1 9/32	2 1/32	5 7/8	4 13/16	1 9/8	5/32	1/2	9/16	15/32	7/8	29.99

Clevis Type Grab Hooks

Provides a chain to grab hook connection method that completely eliminates mechanical connection devices.

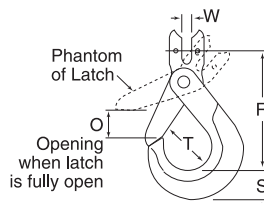
Sale Price
As Low As
\$19.99



Cat. No.	Chain Size	Load Limit	A	B	C	D	E	F	G	H	I	J	Sale Price Each
ADQACC-730	9/32	4,300	1 1/16	1 1/8	2 1/8	2 1/8	13/32	1/8	3/8	13/32	11/32	5/8	19.99
ADQACC-735	3/8	8,800	1 1/32	1 1/2	2 7/8	2 5/8	1/2	5/32	1/2	9/16	15/32	7/8	19.99
ADQACC-740	1/2	15,000	1 1/4	2	3 1/2	3 11/32	5/8	3/16	5/8	3/4	21/32	1 1/8	39.99

Safety Hooks

Sale Price
\$74.99



Positively locks when the hook is loaded and remains locked during entire lifting operation. Cannot open accidentally.

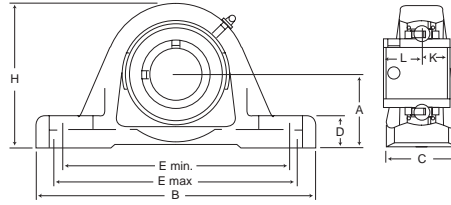
Cat. No.	Chain Size	Load Limit	R	T	S	O	W	Sale Price Each
ADQACC-785	9/32	4,300	4 1/2	1 1/2	1	1 3/4	3/8	74.99

**Pillow Block
Standard Duty
Standard Center Height
Set Screw Locking - Narrow Inner Ring - M-Seal**

MOUNTED BEARINGS



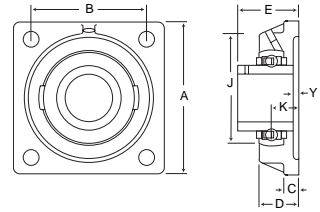
**Sale Price
As Low As
\$23⁵⁹**



Cat. No.	Bore	Load Rating	A	B	C	D	E Min	E Max	H	K	L	Sale Price Each
ADQSKF-401	5/8	2,150	13/16	5	11/4	8/16	315/32	411/64	27/32	1/4	5/8	23.59
ADQSKF-402	3/4	2,850	15/16	5	11/4	9/16	315/32	43/16	217/32	9/32	23/32	24.20
ADQSKF-404	15/16	3,150	17/16	5 1/8	113/32	5/8	311/16	411/32	23/4	5/16	25/32	23.65
ADQSKF-405	1	3,150	17/16	5 1/8	113/32	5/8	311/16	411/32	23/4	5/16	25/32	23.65
ADQSKF-407	1 3/16	4,390	111/16	6	19/16	21/32	41/4	5	37/32	23/64	7/8	28.30
ADQSKF-408	1 1/4	4,390	111/16	6	19/16	21/32	41/4	5	37/32	23/64	7/8	28.30
ADQSKF-409	1 1/4	5,740	17/8	6 5/16	125/32	3/4	411/16	5 1/4	321/32	3/8	1	30.29
ADQSKF-410	1 3/8	5,740	17/8	6 5/16	125/32	3/4	411/16	5 1/4	321/32	3/8	1	30.29
ADQSKF-411	1 7/16	5,740	17/8	6 5/16	125/32	3/4	411/16	5 1/4	321/32	3/8	1	30.29
ADQSKF-412	1 1/2	6,910	115/16	6 29/32	129/32	3/4	415/16	5 3/4	329/32	29/64	1 1/8	39.75
ADQSKF-413	1 11/16	7,470	115/16	6 29/32	129/32	3/4	415/16	5 3/4	329/32	29/64	1 1/8	46.59
ADQSKF-414	1 3/4	7,470	115/16	6 29/32	129/32	3/4	415/16	5 3/4	329/32	29/64	1 1/8	46.59
ADQSKF-415	1 15/16	7,900	21/4	8	21/8	7/8	57/8	6 1/2	41/2	7/16	1 17/64	53.00
ADQSKF-416	2	7,900	2 1/2	8 5/8	23/16	15/16	6 3/8	7 1/8	5	1/2	19/32	53.00
ADQSKF-417	2 3/16	9,810	2 1/2	8 5/8	23/16	15/16	6 3/8	7 1/8	5	1/2	19/32	53.00

**Four Bolt Flange
Standard Duty
Set Screw Locking - Narrow Inner Ring - M-Seal**

**Sale Price
As Low As
\$21⁵⁰**



Cat. No.	Bore	Load Rating	A	B	C	D	E	J	K	Y	Sale Price Each
ADQSKF-437	1/2	2,150	3	2 1/8	13/32	15/16	17/32	2 1/8	37/64	21/64	39.75
ADQSKF-438	5/8	2,150	3	2 1/8	13/32	15/16	17/32	2 1/8	37/64	21/64	21.50
ADQSKF-439	3/4	2,860	3 3/8	2 1/2	5/8	1 1/8	115/32	2 3/8	3/4	15/32	22.40
ADQSKF-440	7/8	3,150	3 3/4	2 3/4	5/8	1 3/16	117/32	2 3/4	3/4	29/64	23.65
ADQSKF-442	1	3,150	3 3/4	2 3/4	5/8	1 3/16	117/32	2 3/4	3/4	29/64	23.65
ADQSKF-443	1 1/8	4,390	4 1/4	3 1/4	19/32	19/32	121/32	3 1/4	25/32	27/64	28.30
ADQSKF-444	1 3/16	4,390	4 1/4	3 1/4	19/32	19/32	121/32	3 1/4	25/32	27/64	28.30
ADQSKF-445	1 1/4	4,390	4 1/4	3 1/4	19/32	19/32	121/32	3 1/4	25/32	27/64	28.30
ADQSKF-446	1 1/4	5,740	4 5/8	3 5/8	5/8	1 3/8	113/16	3 5/8	13/16	7/16	38.20
ADQSKF-447	1 3/8	5,740	4 5/8	3 5/8	5/8	1 3/8	113/16	3 5/8	13/16	7/16	30.30
ADQSKF-448	1 7/16	5,740	4 5/8	3 5/8	5/8	1 3/8	113/16	3 5/8	13/16	7/16	30.30
ADQSKF-449	1 1/2	6,910	5 1/8	4	21/32	117/32	21/32	4	29/32	29/64	39.75
ADQSKF-450	1 11/16	7,470	5 3/8	4 1/8	11/16	119/32	27/64	4 1/4	29/32	15/32	46.59
ADQSKF-451	1 3/4	7,470	5 3/8	4 1/8	11/16	119/32	27/64	4 1/4	29/32	15/32	46.59
ADQSKF-452	1 15/16	7,900	5 5/8	4 3/8	25/32	13/4	219/64	4 5/8	11/32	39/64	53.00
ADQSKF-453	2	9,810	6 3/8	5 1/8	27/32	17/8	27/16	5	15/32	43/64	53.00
ADQSKF-454	2 3/16	9,810	6 3/8	5 1/8	27/32	17/8	27/16	5	15/32	43/64	53.00

**Single Point Automatic Lubricators
LAGD 60 and LAGD 125**

LUBRICATORS

**Sale Price
As Low As
\$33⁹⁹**



Flexible time setting period ranging between one and 12 months. High reliability and dispense rate accuracy allow fit and forget procedure until predetermined replacement date. Transparent lubricant container allows visual inspection of dispense rate. High capacity, compact size permits installation in restricted areas. Redesigned on-return valve of the oil-filled SYSTEM 24 is less sensitive to vibration, minimizing the risk of leakage. Available filled with various high quality SKF greases and oils, which are especially developed for a wide range of bearing applications. Dispense rate setting is a simple part of the installation process. Hermetic sealing prevents ingress of dirt or foreign matter. Allows low grease dispense rate. Available in two sizes: 4.25 and 2.03 fl. oz. Can be temporarily deactivated.



SKF-LAGD125WA2



SKF-LAGD60WA2



Cat. No.	Lube Description	Application	Temp/Range Deg-F	Base Oil	Oil Viscosity CST @ 40 C	Base Thickener	Color	Sale Price Each
ADQSKF-LAGD125WA2	LGWA 2 Grease	Multi Purpose	-22/+284	Mineral	185	Lithium Complex	Amber	33.99
ADQSKF-LAGD60WA2	LGWA 2 Grease	Multi Purpose	-22/+284	Mineral	185	Lithium Complex	Amber	33.99
ADQSKF-LAGD125EM2	LGEM 2 Grease	High Loads Slow Rotation	-4/+250	Mineral	500	Lithium	Black	35.45
ADQSKF-LAGD60EM2	LGEM 2 Grease	High Loads Slow Rotation	-4/+250	Mineral	500	Lithium	Black	35.45
ADQSKF-LAGD125HB2	Hi Temp Grease	Hi Temp Loads	-4/+300	Mineral	400	Cal/Sulph/Complex	Brown	36.15
ADQSKF-LAGD60HB2	Hi Temp Grease	Hi Temp Loads	-4/+300	Mineral	400	Cal/Sulph/Complex	Brown	37.95
ADQSKF-LAGD125GB2	BioDegr/Grease	Biodegradable, Low Toxicity	-40/+250	Synthetic Ester	110	Lithium/Calcium	Off White	37.25
ADQSKF-LAGD125FP2	LGFP 2 Grease	Food Process Industry	-4/+230	Medical White	130	Al-Complex	Clear	41.75
ADQSKF-LAGD60FP2	LGFP 2 Grease	Food Process Industry	-4/+230	Medical White	130	Al-Complex	Clear	43.85
ADQSKF-LAGD125HP2	LGH2 2 Grease	High Performance Polyurea	-40/+300	Mineral	96	Di-Urea	Blue	37.25
ADQSKF-LAGD60HP2	LGH2 2 Grease	High Performance Polyurea	-40/+300	Mineral	96	Di-Urea	Blue	37.25
ADQSKF-LAGD125HMT68	LHMT 68 Oil	Mineral EP Type Chain Oil	14/+194	Mineral	40	DNA	Yellow Brown	38.25
ADQSKF-LAGD60HMT68	LHMT 68 Oil	Mineral EP Type Chain Oil	14/+194	Mineral	40	DNA	Yellow Brown	35.95
ADQSKF-LAGD125HHT26	LHHT 26 Oil	High Temp Chain Oil	-4/+482	Synthetic	40	DNA	Yellow Orange	48.15
ADQSKF-LAGD60HHT26	LHHT 26 Oil	High Temp Chain Oil	-4/+482	Synthetic	40	DNA	Yellow Orange	50.10
ADQSKF-LAGD125HFP15	HFP 150 Oil	Food Process Industry	-4/+302	Mineral	40	DNA	Clear	40.09

AMERICAN PATTERN FILES



American Pattern Files are generally used when metal removal is most important. Prices below are for broken box quantities. Please call for box quantity discounts. Made in the USA.

Type of Cut

Single cut files have a series of parallel teeth running diagonally across the width of the file surface. Generally used for sharpening and finishing operations.

Double cut files have two series of parallel teeth running diagonally across the width of the file surface with one series crossing the other. Best suited for rapid removal of stock.

Flat Files

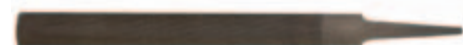


**Sale Price
As Low As
\$2⁹⁸**

Universally used for fast stock removal when a smooth finish is not required. Double cut. It is thicker than a mill file in cross section.

Size			Bastard		2nd Cut		Smooth	
Lgth.	Width	Thickness	Cat. No.	Sale Price Each	Cat. No.	Sale Price Each	Cat. No.	Sale Price Each
4	15/32	3/32	ADQGRO-32-288	5.44	—	—	ADQGRO-32-303	4.57
6	39/64	3/32	ADQGRO-32-289	3.62	ADQGRO-32-296	2.98	ADQGRO-32-304	5.33
8	25/32	13/64	ADQGRO-32-290	6.94	ADQGRO-32-297	4.97	ADQGRO-32-305	7.03
10	31/32	1/4	ADQGRO-32-291	5.80	ADQGRO-32-298	6.44	ADQGRO-32-306	9.55
12	15/32	9/32	ADQGRO-32-292	7.65	ADQGRO-32-299	8.64	ADQGRO-32-307	13.27
14	111/32	5/16	ADQGRO-32-293	10.51	—	—	—	—

Half Round Files



**Sale Price
As Low As
\$5¹⁷**

Often used by machinist and in foundry work where castings are finished by filing. Rounded with approximately a third of a round on one side and double cut flat on the other. The round side is double cut as well except on all smooth files and the 4" and 6" second cut which are single cut.

Size			Bastard		2nd Cut		Smooth	
Lgth.	Width	Thickness	Cat. No.	Sale Price Each	Cat. No.	Sale Price Each	Cat. No.	Sale Price Each
4	23/64	9/64	ADQGRO-32-309	5.17	—	—	ADQGRO-32-324	6.00
6	19/32	11/64	ADQGRO-32-310	19.89	ADQGRO-32-318	6.10	ADQGRO-32-325	6.29
8	3/4	7/32	ADQGRO-32-311	6.47	ADQGRO-32-319	7.16	ADQGRO-32-326	7.67
10	7/8	9/32	ADQGRO-32-312	8.05	ADQGRO-32-320	9.14	ADQGRO-32-327	9.16
12	11/8	11/32	ADQGRO-32-313	10.31	ADQGRO-32-321	10.75	ADQGRO-32-328	11.83
14	19/32	13/32	ADQGRO-32-314	13.42	—	—	—	—

FILE HANDLES

Plastic Handles

**Sale Price
As Low As
\$1⁹⁵**



Made from non-slip unbreakable plastic and shaped to fit the hand for more comfort. The long gripping inserts are tempered and threaded to ensure proper alignment and positive hold. Can be used over and over.

Cat. No.	Size	Sale Price Each	Cat. No.	Size	Sale Price Each
ADQGFH-1	For 4" Files	1.95	ADQGFH-3	For 8" Files	2.02
ADQGFH-2	For 6" Files	2.02	ADQGFH-4	For 10" - 14" Files	2.17

Twist-On Handles

**Complement your
file with
25%
Savings**



Handle twists onto the file holding it tightly in two places. Case hardened threaded steel insert. Waxed white birch handles shaped to fit the hand comfortably. Ferrules are made of heavy gauge steel, bright zinc plated.

Cat. No.	Size	Sale Price Each	Cat. No.	Size	Sale Price Each
ADQSK-1	For Small Files	1.61	ADQSK-5	For 8" Files	2.00
ADQSK-2	For 4" Files	1.61	ADQSK-6	For 10" Files	2.00
ADQSK-3	For 5" Files	1.71	ADQSK-7	For 12" Files	2.17
ADQSK-4	For 6" Files	1.71	ADQSK-8	For 14" Files	2.17

6" Big Digit Premium Stainless Caliper

CALIPERS



**Sale Price
\$19⁹⁹**

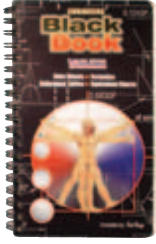


- Zero setting at any position
- Big .43" (11mm) high LCD display
- Instant SAE/ metric conversion
- Graduations: 0.0005"/0.01mm
- Includes fitted case with two batteries
- Full one year warranty

Cat. No.	Description	Range	Sale Price Each
ADQYPI-1	Digital Caliper in Fitted Case	0-6" (0-150mm)	19.99
ADQYPI-2	Caliper Replacement Battery	—	1.49

Engineer's Black Book

REFERENCE BOOKS



FREE
Drill Gauge With
Every Purchase!

Sale Price
\$19⁹⁵

A pocket sized book that contains a wealth of up-to-date, useful, practical and hard to find information. Every page is coated with a glare-free laminate that keeps pages from being torn and grease stained. Ideal for tool rooms, machine shops, fabricators, apprentices, technical trade colleges, industrial and fastener professionals and more. Drill point sharpening gauge supplied free with each book.

Cat. No.	Description	Sale Price Each
ADQDR-95	Engineer's Black Book	19.95

Machinery's Handbook Pocket Companion

An extremely concise yet completely authoritative ready reference which draws its content largely from Machinery's Handbook. This book is designed for anyone in the machine trades for whom convenient access to just the most basic data is at a premium. The Pocket Companion will not replace the Handbook but instead will serve as a handy complement. Copyright 2000. 352 pages.

Limited Time Only
\$18⁴⁹



Cat. No.	Description	Sale Price Each
ADQDR-11	Machinery's Handbook Pocket Companion	18.49

Machinery's Handbook - 27th Edition

This modern handbook is a necessity for everyone in the mechanical industries. It contains the information needed wherever machines, tools and mechanical devices are designed and constructed. MACHINERY'S HANDBOOK contains mathematical and mechanical tables, standards, rules, formulas and general data. Accurate, reliable and timely, this is practical, useable, technical information that has been stripped of nonessentials and clarified for direct application to the job at hand. This book helps you to meet today's work problems whether you are a designer, machinist, mechanical engineer, student, production executive, apprentice or inspector. The deluxe thumb index allows for quick subject reference. DR-5J Jumbo Edition available with bigger type. Copyright 2004.



Save
Over
10%

Cat. No.	Description	Sale Price Each
ADQDR-5T	Machinery's Handbook w/Thumb Index	79.99

MACHINIST'S CALCULATOR

Sale Price
\$29⁹⁵



Determine the best machine speed and feed rates for all tools and material accurately with complete portability. Modern high-speed equipment combined with vastly superior tools yield production and quality advantages like never before. The machinist calculator provides operators a hand-held device to determine startup parameters in the machine/tool/material equation. Achieve optimum production; minimize tool damage and wasted pieces. Built-in formulas return proper RPM, SFM, IPM, FPT, and CT (Cut Time) for all operations on all kinds of set-ups for machine, materials and tools. Calculator has prompting formats and yields time estimates. Perfect educational tool that fits in palm or pocket.

Cat. No.	Description	Sale Price Each
ADQTI-MC-20	Machinists Calculator	29.95

Klever Kutter

BOX CUTTERS

Automatically pulls cardboard away from box contents eliminating product damage by as much as 95% over conventional box cutters. Features a high quality blade that will last for hundreds of cuts. It will easily cut boxes, tops, tape, strapping, stretch wrap and more. Designed to be durable, safe, easy to use and disposable. No exposed blades.

Two Knives
in One!



Sale Price
\$1⁴⁹

Cat. No.	Description	Sale Price Each
ADQKK-3	Reid Klever Kutter Yellow	1.49

Klever Konzept

Two Carbide Blades in One Knife!



Only
\$1⁹⁹

This ergonomically designed knife offers increased safety, comfort and usability. With a wide opening, it cuts through 90% of common cardboard thicknesses. Two carbon steel blades insure long life and strength to cut through the toughest of products. With no exposed blades, there is no fear of accidental user cuts or damage to material contained in package being opened. It's dishwasher safe to insure elimination of cross-contamination. Dimensions of: 5-3/4" x 1-1/2" insures ease of use and storage.

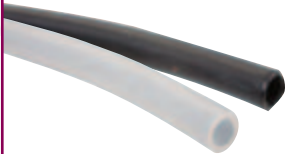
Cat. No.	Description	Sale Price Each
ADQKK-6	Yellow with dual carbon blades	1.99

Save Up To 25% ON TUBING AND ACCESSORIES SHOWN HERE



Tubing made of the highest quality compounds to the most exacting industry standards. Other colors and sizes (including metric) are available as special orders. Please call for price and delivery. Due to custom cutting, no returns can be made. **All tubing shown here is compatible with the SMC fittings shown on right side of this page.**

Nylon Tubing



High quality nylon tubing for applications requiring low density (lightweight), toughness flexibility and chemical resistance. It is dimensionally stable.

Black Cat. No.	Natural Cat. No.	O.D.	I.D.	Wall Thickness	Working Pressure*	Sale Price Per Foot
ADQTUB-10	ADQTUB-13	1/8	.093	.016	225	.08
ADQTUB-15	ADQTUB-18	1/4	.170	.040	265	.25
ADQTUB-20	ADQTUB-23	3/8	.275	.050	220	.39
ADQTUB-25	ADQTUB-28	1/2	.375	.062	200	.59

*psi @ 75°F

Polyurethane Tubing



Made from ether based compound, it will not hydrolyze or degrade when exposed to water. Extremely flexible and resistant to kinking. Stand up well to fuels and oils.

Black Cat. No.	Natural Cat. No.	O.D.	I.D.	Wall Thickness	Working Pressure*	Sale Price Per Foot
ADQTUB-70	ADQTUB-73	1/8	1/16	.031	193	.08
ADQTUB-75	ADQTUB-78	1/4	.160	.045	147	.25
ADQTUB-80	ADQTUB-83	3/8	1/4	.062	148	.49
ADQTUB-85	ADQTUB-88	1/2	.320	.090	133	.99

*psi @ 70°F

Polyethylene Tubing



A low pressure tubing that is widely used due to its resistance to most chemicals and solvents, good flexibility and economical cost. Produced from high quality resins and extruded to close tolerances.

Black Cat. No.	Natural Cat. No.	O.D.	I.D.	Wall Thickness	Working Pressure*	Sale Price Per Foot
ADQTUB-50	ADQTUB-53	1/8	.062	.031	150	.05
ADQTUB-55	ADQTUB-58	1/4	.170	.040	135	.06
ADQTUB-60	ADQTUB-63	3/8	.250	.062	120	.12
ADQTUB-65	—	1/2	.375	.062	90	.19

*psi @ 70°F

Value Priced

AIR FITTINGS AS LOW AS 99¢

One Touch



Can be used with nylon, soft nylon, polyurethane and polyethylene tubing. Max operating pressure 150 psig. Proof pressure 430 psig. Ambient and media temperature 30-140°F. Threads are NPT unless otherwise noted. All items listed below are in stock for same day shipping. Other tube sizes including metric, thread types and body styles are available as special order. Please call for price and delivery. **See TUBING AND ACCESSORIES shown on left side of this page for tubing.**

Union Tee



Cat. No.	SMC	Tube Size OD	Sale Price Each
ADQSMC-380	KQ2T01-00	1/8	2.49
ADQSMC-385	KQ2T07-00	1/4	2.49
ADQSMC-390	KQ2T11-00	3/8	3.69
ADQSMC-395	KQ2T13-00	1/2	4.89

Straight Union



Cat. No.	SMC	Tube Size OD	Body Dia.	Length	Sale Price Each
ADQSMC-105	KQ2H01-00	1/8	.38	1.24	1.69
ADQSMC-110	KQ2H07-00	1/4	.52	1.36	1.69
ADQSMC-115	KQ2H11-00	3/8	.70	1.67	2.59
ADQSMC-120	KQ2H13-00	1/2	.85	1.75	3.29

Male Elbow



Cat. No.	SMC	Tube Size OD	Thread NPT	Height**	Sale Price Each
ADQSMC-130*	KQL01-32	1/8	10-32*	.66	.99
ADQSMC-135	KQ2L01-34S	1/8	1/8	.89	1.59
ADQSMC-140	KQ2L01-36S	1/8	1/4	.96	1.99
ADQSMC-145*	KQ2L07-32	1/4	10-32*	.95	2.09
ADQSMC-150	KQ2L07-34S	1/4	1/8	1.02	1.69
ADQSMC-155	KQ2L07-36S	1/4	1/4	1.10	1.79
ADQSMC-160	KQ2L07-36S	1/4	3/8	1.16	2.49
ADQSMC-165	KQ2L11-36S	3/8	1/4	1.28	2.59
ADQSMC-170	KQ2L11-36S	3/8	3/8	1.34	2.99
ADQSMC-175	KQ2L11-37S	3/8	1/2	1.44	3.29
ADQSMC-180	KQ2L13-35S	1/2	1/4	1.44	3.49
ADQSMC-185	KQ2L13-36S	1/2	3/8	1.52	3.59
ADQSMC-190	KQ2L13-37S	1/2	1/2	1.57	3.79

*UNF threads

**After thread installation.

Branch Tee



Cat. No.	SMC	Tube Size OD	Thread NPT	Height*	Sale Price Each
ADQSMC-305	KQ2T01-34S	1/8	1/8	.89	2.29
ADQSMC-310	KQT01-35S	1/8	1/4	.96	2.99
ADQSMC-315	KQ2T07-34S	1/4	1/8	1.02	2.49
ADQSMC-320	KQ2T07-35S	1/4	1/4	1.10	2.49
ADQSMC-325	KQ2T07-36S	1/4	3/8	1.16	2.99
ADQSMC-330	KQ2T11-35S	3/8	1/4	1.28	3.79
ADQSMC-335	KQ2T11-36S	3/8	3/8	1.34	4.69

*After thread installation

PLASTIC TUBING CUTTER



Provides a square cut without deforming the tubing. Allows for a secure connection into a fitting. Ideal for plastic tubing 1/8" to 3/4" OD. The leash allows you to affix to clothing or cutting location.

Cat. No.	Description	Sale Price Each
ADQTUB-100	Plastic Tubing Cutter	6.69
ADQTUB-105	Plastic Tubing Cutter W/Leash	8.39
ADQTUB-110	10 Replacement Blades	14.79

Save Up To 20%



QUICK FRAME STRUCTURAL SYSTEMS

80/20® Inc.

The Industrial Erector Set®

80/20 quick frame structural systems can be assembled into modular shelving, furniture, machine guards, tank covers, displays, carts, etc.

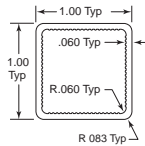
These 80/20 Products On Sale For A Limited Time

**90 Series
Built on 1" Increments**

Quick frame tubing is made of 6105-T5 clear anodized aluminum. Quick frame assembly is easy. Simply cut the tube to length and hammer the tough nylon corners into tube ends. Plastic panels, wire mesh, hinges, handles can be attached by screws or double faced tape. Please call for price and delivery on 80/20 special size plastic or acrylic panels and wire mesh. Stock length for tubing is 145", with a tolerance of ±.125". Other lengths available as special order. Please call for price and delivery. A cutting charge applies for all extrusions not of stock length. Due to custom cutting no returns can be made.

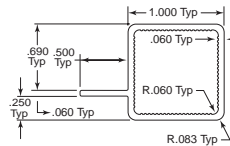


9000



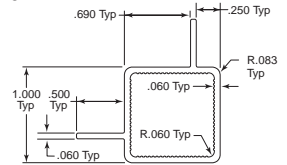
Cat. No.	Length	Sale Price Each
ADQAES-9000	Per Inch	.11
ADQAES-9000-96	96"	11.84
ADQAES-9000-145	145"	15.82

9005



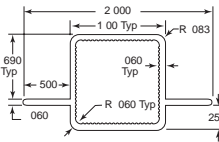
Cat. No.	Length	Sale Price Each
ADQAES-9005	Per Inch	.13
ADQAES-9005-96	96"	13.58
ADQAES-9005-145	145"	18.45

9010



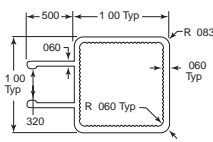
Cat. No.	Length	Sale Price Each
ADQAES-9010	Per Inch	.14
ADQAES-9010-96	96"	14.45
ADQAES-9010-145	145"	19.77

9015



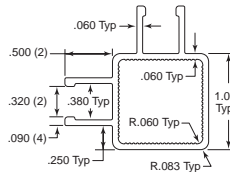
Cat. No.	Length	Sale Price Each
ADQAES-9015	Per Inch	.14
ADQAES-9015-96	96"	14.45
ADQAES-9015-145	145"	19.77

9025



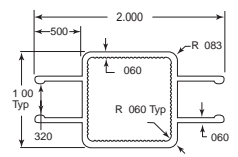
Cat. No.	Length	Sale Price Each
ADQAES-9025	Per Inch	.15
ADQAES-9025-96	96"	13.33
ADQAES-9025-145	145"	21.09

9030



Cat. No.	Length	Sale Price Each
ADQAES-9030	Per Inch	.16
ADQAES-9030-96	96"	17.07
ADQAES-9030-145	145"	23.73

9035



Cat. No.	Length	Sale Price Each
ADQAES-9035	Per Inch	.16
ADQAES-9035-96	96"	17.07
ADQAES-9035-145	145"	23.73

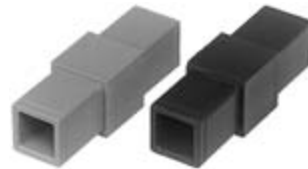
QUICK FRAME ACCESSORIES

End Caps



Cat. No.	Use With Series	Color	Sale Price Each
ADQAES-9210	9000	Black	.95
ADQAES-9110	9000	Gray	.95

Two-Way Connectors



Cat. No.	Color	Sale Price Each
ADQAES-9215	Black	2.36
ADQAES-9115	Gray	2.36

Two-Way Corners



Cat. No.	Color	Sale Price Each
ADQAES-9220	Black	2.36
ADQAES-9120	Gray	2.36

Three-Way Tee



Cat. No.	Color	Sale Price Each
ADQAES-9230	Black	2.36
ADQAES-9130	Gray	2.36

Straight 90° Base Connectors



Cat. No.	Color	Sale Price Each
ADQAES-9240	Black	1.32
ADQAES-9140	Gray	1.32

Three-Way Corner



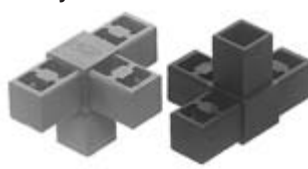
Cat. No.	Color	Sale Price Each
ADQAES-9250	Black	2.36
ADQAES-9150	Gray	2.36

Cross Connector



Cat. No.	Color	Sale Price Each
ADQAES-9260	Black	2.36
ADQAES-9160	Gray	2.36

Four-Way Connector



Cat. No.	Color	Sale Price Each
ADQAES-9270	Black	2.36
ADQAES-9170	Gray	2.36

Five-Way Junction



Cat. No.	Color	Sale Price Each
ADQAES-9280	Black	2.68
ADQAES-9180	Gray	2.68

N95 Particulate Respirators

RESPIRATORS AND FILTERS



Save Over 25% On 3M Product

8210 N95 Respirator

- High quality economical respirator
- Features lightweight construction for greater worker comfort
- Adjustable noseclip offers a custom fit and secure seal
- Features advanced electret material
- Meets NIOSH 42CFR84 standard



8210

8511 N95 Respirator

- For comfortable extended wear in dusty environments
- Offers durability and advanced no-frills features
- Advanced electret media and the 3M™ Cool Flow™ exhalation valve make breathing easier and cooler
- Innovative M-nose clip adjusts easily to provide an effective seal to reduce eyewear fogging
- Meets NIOSH 42CFR84 standard



8511

Cat. No.	Description	Quantity	Sale Price Each
ADQ1840048	8210 N95 Respirator	20/box	11.99
ADQ1840052	8511 N95 Respirator	10/box	13.49

N95 Filters



N95 Filter



P95 Filter

Cat. No.	Description	Quantity	Sale Price Each
ADQ1840722	N95 filters for use with Filter Retainer	10/box	9.99
ADQ1840723	P95 filters for use with Filter Retainer	10/box	11.99

Retainers



Filter Adapter



Prefilter Retainer

Cat. No.	Description	Sale Price Each
ADQ1840724	Filter Adapter for use with the 2000 Series for 7093 filters	1.39
ADQ1840725	Prefilter Retainer for use with N95 & P95 filters	1.09

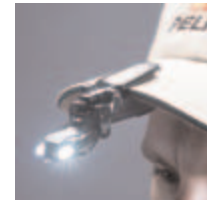
Pelican™ VB3 LED



FLASHLIGHTS

In Black or Yellow
Only

\$11.99



Water resistant. Pelican's latest addition to the VersaBrite family in an LED version. Dual super bright white LEDs never need replacing and provide over 100 hours of battery usage. Body made of virtually indestructible Xenoy®. Lights turn on when head is flipped up. Swivel head pivots to a full 180° for light where you need it. Multiple use built-in clip attaches to surfaces up to 1/2" thick.

Cat. No.	Description	Batteries	Sale Price Each
ADQ180227	Yellow VB3 LED	CR 2032 (included)	11.99
ADQ180228	Black VB3 LED	CR 2032 (included)	11.99

Pelican™ L1 LED



Only \$10.49
Includes Batteries

L1 LED Light provides a concentrated close quarter beam. The white LED lamp provides up to 50,000 hours of usage. Four replaceable LR 44 alkaline coin cells (included) offer up to 130 hours of battery life. It is equipped with a neck lanyard and a handy push button on/off switch that can be used with only one hand. The L1 LED Light is ideal for all applications and is water resistant (not for diving applications). You break it, we replace it... forever.

Cat. No.	Description	Batteries	Sale Price Each
ADQ180225	Yellow L1 LED with Lanyard	4 LR 44 1.5V (included)	10.49
ADQ180226	Black L1 LED with Lanyard	4 LR 44 1.5V (included)	10.49

Pelican™ Black Knight™ M6

Tactical Xenon Lighting
For Only \$44.99



The newest addition to the Black Knight™ Series is the M6 Lithium. This new light is sure to be a vital asset to the Law Enforcement market with its extreme brightness. Durable construction enables it to withstand rugged conditions while out in the field. The M6 is packaged with a free Cordura® holster and 2 CR123 Lithium batteries. You break it, we replace it... forever.

Cat. No.	Description	Batteries (Included)	Sale Price Each
ADQ180230	Black M6 Lithium	CR123 Lithium	44.99
ADQ180231	Xenon Replacement Lamp	—	8.99

Gerber Nautilus™

MULTI-FUNCTION TOOLS

Limited Supply — Act Now
to obtain yours at this super low price!



The Gerber Nautilus multi-function tool and flashlight unites technology and functionality to deliver excellent performance. The Nautilus features a multi-purpose four mode LED lighting unit that springs open at the push of a button, illuminating the area in front of the tool during use. Also features ergonomic handles with Softgrip™ inserts for a sure grip, Fiskars® scissors and a range of functional tools. All tool components lock open with the patented Saf.T.Plus™ locking system - the safest, strongest lock available.

Cat. No.	Description	Sale Price Each
ADQ180172	Nautilus™ Multi-Function Tool	34.99

Technical Specs:

- Overall Length: 6.5
- Length Closed: 4.5
- Length of Blade: 2.375
- Weight: 3.8 oz.
- Blade Material: Stainless Steel
- Handle Material: Ergonomic handles with Softgrip™ over mold
- Sheath: Ballistic nylon



Save Over 20%

For A Limited Time

SAVINGS SPOTLIGHT

Prices Effective January 1- 31, 2008

Klever Konzept
Sale Price

\$1.99

Page 12

New!



Nylon Leveling Pads
Save **20%**

Page 8

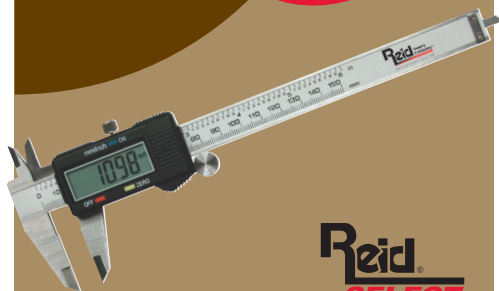


Premium Stainless
Caliper
Sale Price

\$19.99

Page 11

New!



Reid
SELECT



Lubricators
As Low As

\$33.99

Page 10

Reid
SELECT



Economy Hand Wheels
As Low As

\$7.49

Page 4



Reid Supply is a Reid Entities Company